

# MONTHLY MEMBERSHIP PROGRESS REPORT

LOCATION MONTANA

District 37

Results as of: 4/30/2023

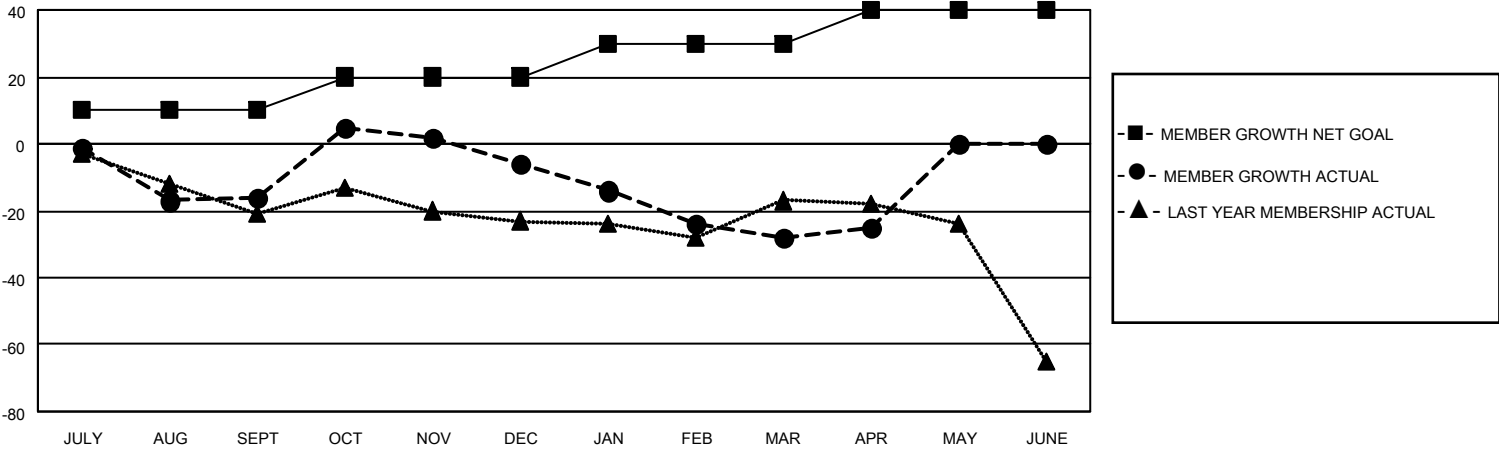
Clubs			
RESULTS FOR 2022-2023			
QUARTER	NEW CLUB GOAL	NEW CLUBS	DROPPED CLUBS
JULY/AUG/SEPT	0	0	1
OCT/NOV/DEC	1	0	0
JAN/FEB/MAR	1	0	0
APR/MAY/JUNE	0	0	0

Members			
RESULTS FOR 2022-2023			
QUARTER	MEMBER GROWTH NET GOAL	MEMBER GROWTH ACTUAL	DROPPED MEMBERS ACTUAL (including transfers)
JULY/AUG/SEPT	10	30	43
OCT/NOV/DEC	10	60	47
JAN/FEB/MAR	10	33	53
APR/MAY/JUNE	10	13	7

**GOALS AND ACTUAL NEW CLUBS CUMULATIVE**



**GOALS AND ACTUAL MEMBERS CUMULATIVE**



DROPPED CLUBS: 1	
<b>DROPPED MEMBERS</b>	
DECEASED	21
CLUB CANCELLED	11
OTHER	121
<b>TOTAL</b>	<b>153</b>

34 CLUBS OF 61 ADDED 1 OR MORE NEW MEMBERS

[CLICK HERE FOR CUMULATIVE MEMBERSHIP DATA](#)

<u>GENDER DISTRIBUTION</u>	
MALE	1,055 (68.73%)
FEMALE	480 (31.27%)
NON BINARY	0 (0.00%)
PREFER NOT TO ANSWER	0 (0.00%)
<hr/>	
TOTAL FAMILY UNIT MEMBERS	294
FAMILY MEMBERS PAYING HALF DUES	147